

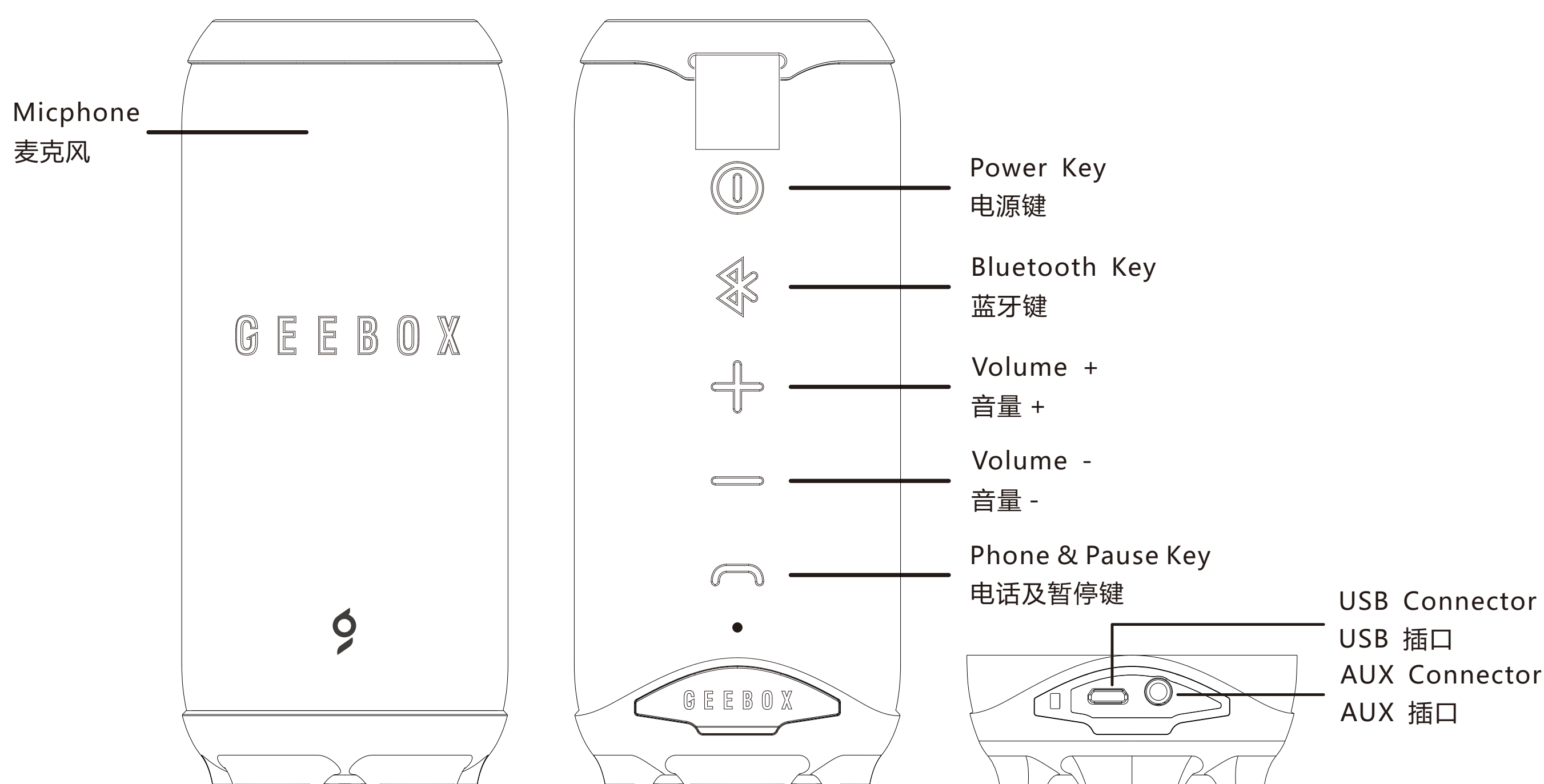
# GEEBOX M2

## BLUETOOTH SPEAKER

### QUICK START MANU

#### 快速使用指南

#### Product Diagram/产品简图



#### Note/注意事项

GEEBOX M2 automatically starts Bluetooth pairing after power on, open BT function of your mobile phone, click 'GEEBOX M2' will success pairing. If they already paired successfully before, BT will connected automatically just after GEEBOX power on. GEEBOX M2在开机伊始便会自动启动蓝牙配对寻找模式, 届时请打开手机蓝牙, 查找GEEBOX M2便可配对成功。如已经配对成功, 下次便可自动连接无需重新配对

#### LED Status Definition/指示灯状态

	White 白色常亮	Blue Blink 蓝色闪烁	Blue 蓝色常亮	Red Blink 红色闪烁
	AUX in AUX 插入	Power on & BT paring 开机-蓝牙配对中	BT connected 蓝牙连接成功	N/A
	Charging 充电中	N/A	Battery Full 充电电量满	Power < 20% 电量<20%

#### Warning/警告

- \* GEEBOX M2 is splashproof, please do not dripping or splashing during charging.  
GEEBOX M2具有防溅水功能, 但请不要将其浸入水中或者在充电的时候溅水。
- \* Please do not touch passive radiators.  
请不要触碰两侧被动振膜。

**WARNING:** Chang or modifications to this unit not expressly approved by the party responsible for compliance could void the user's authority to operate the equipment.

**NOTE:** This equipment has been tested and found to comply with the limits for a Class B digital device, pursuant to Part 15 of the FCC Rules. These limits are designed to provide reasonable protection against harmful interference in a residential installation. This equipment generates, uses and can radiate radio frequency energy and, if not installed and used in accordance with the instructions, may cause harmful interference to radio communications.

However, there is no guarantee that interference will not occur in a particular installation. If this equipment does cause harmful interference to radio or television reception, which can be determined by turning the equipment off and on, the user is encouraged to try to correct the interference by one or more of the following measures:

- Reorient or relocate the receiving antenna.
- Increase the separation between the equipment and receiver.
- Connect the equipment into an outlet on a circuit different from that to which the receiver is connected.
- Consult the dealer or an experienced radio/TV technician for help.
- No naked flame sources, such as lighted candles, should be placed on the apparatus.
- Attention should be drawn to the environmental aspects of battery disposal.
- The use of apparatus in tropical and/or moderate climates.
- CAUTION  
Danger of explosion if battery is incorrectly replaced.  
Replace only with the same or equivalent type.
- A warning that batteries (battery pack or batteries installed) shall not be exposed to excessive heat such as sunshine, fire or the like.

This device complies with Part 15 of the FCC Rules. Operation is subject to the following two conditions:

- (1) this device may not cause harmful interference, and
- (2) this device must accept any interference received, including interference that may cause undesired operation.

圈内数字代表产品的正常环保使用年限。

The circle number represents the normal environmental protection service life of the product.

#### Key Definition/按键定义

- Make Bluetooth pairing/connected or disconnected.  
使蓝牙开始配对/连接或者断开。
- Vol + after short press or Play next after long press.  
短按增加音量, 长按播放下一首。
- Vol - after short press or Play previous after long press.  
短按减少音量, 长按播放上一首
- Pause/Play during music playing or Answer incoming call by M2 after short press.  
在播放音乐时, 短按使音乐暂停/播放。有来电时短按使用M2音箱接听电话。  
Reject incoming call or Switch calling Mic/Speaker to phone after long press.  
在来电时长按挂点电话或在通话过程中长按由M2接听变为手机接听

#### Common Problem/常见问题

Q: M2包装盒内都有什么随机附件?

A: 塑封包装盒内包括一根Micro USB充电线, 一个说明书, 一个GEEBOX M2蓝牙音箱。

Q: 充电时间需要多久?

A: 使用2A快充充电头, 2.5到3小时即可充满。若使用非快充充电头, 充电时间会变长。

Q: 是否会自动关机?

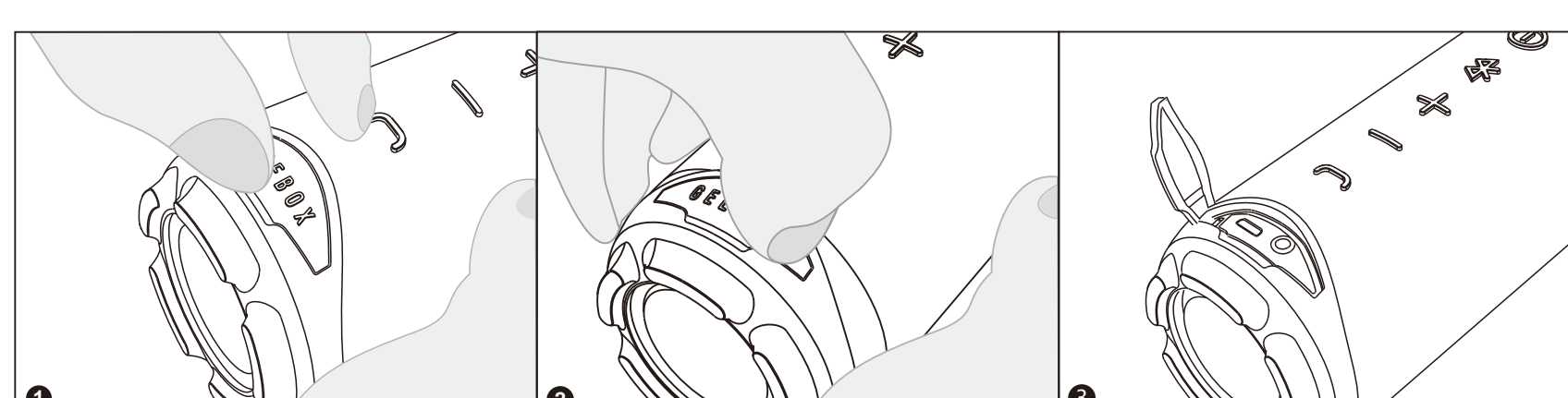
A: 如蓝牙连接后无播放动作, 在10分钟内Geebox M2会自动关机。

Q: M2的尺寸及重量?

A: M2高度168mm, 直径60mm, 重量450g。

Q: 充电口在哪个位置?

A: 充电口在按键下方印着GEEBOX的小盖子内。充电盖打开方式如下图所示:



Q: 蓝牙配对连接成功之后, 再开机会自动连上?

A: 是的。M2会记忆连接历史, 开机时如果上次配对连接的手机/设备蓝牙开启且在连接距离之内, 便会自动连接。蓝牙是一一对一连接, 如果找不到是哪台设备在连接M2, 可通过使用蓝牙按键手动断开已有配对, 使M2进入蓝牙搜索状态, 便可重新配对。

Q: 5级防水是什么意思

A: IPX5是5级防水, 国际标准IP是Ingress Protection的缩写, IP等级5级是针对电气设备外壳对异物侵入的防护等级, IPX5指防止有害的粉尘堆积且用水冲洗无任何伤害——在扣好USB小盖子的前提下, 水溅没有问题

Q: 按键会发出声音吗?

A: 按键时没有按键声音, 是为了保证对音乐及声音大小的听感不产生干扰。

Q: 悬挂的带子多长? 会不会很容易断?

A: 采用户外用品材质挂带, 韧性强度非常好。

二级回答: 带子是便携方案, 长度为3cm左右, 可使用挂钩挂在包上或者车上。